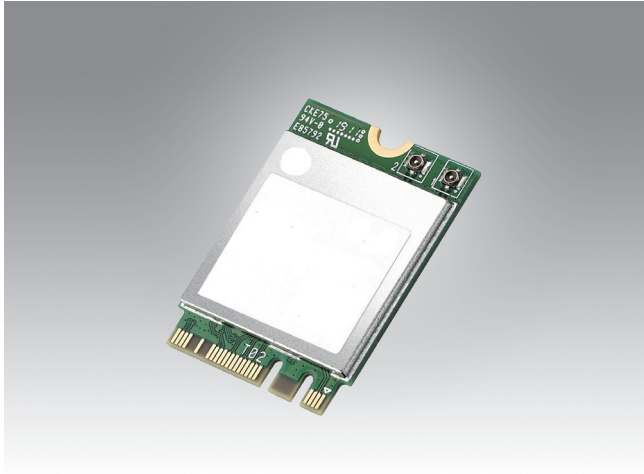


# EWM-W159M2

## 802.11 ac/a/b/g/n + Bluetooth 5.0 M.2 2230 (A-E Key) Card



### Features

- IEEE 802.11 ac/a/b/g/n + Bluetooth 5.0 HS standard
- Support 802.11ac 2x2, Wave-2 compliant with MU-MIMO
- IEEE 802.11i (WPA, WPA2). Open, shared key, and pair-wise key authentication services
- Operating temperature: 0 ~ +70 °C

### Specifications

Main Chipset	RTL 8822CE-CG
Tx/Rx	2Tx/ 2Rx (2 IPEX MHF4 connector Receptacle)
Standard Conformance	802.11 ac/a/b/g/n+BT5.0
Form Factor	M.2 2230, A-E Key card
Interface	WiFi: PCI-E, Bluetooth: USB
Operation Voltage	DC 3.0 ~ 3.3V
Security	WPA/WPA2 (Wi-Fi Protected Access) / WAPI / WEP 64-bit and 128-bit encryption with H/W TKIP processing / AES-CCMP hardware implementation as part of 802.11i security standard
O.S Supported	Windows 7/8.x/10
Temperature Ranges	Operating Temperature: 0 ~ +70°C
Dimensions (L x W x H)	22 x 30 x 2.2 mm

### Ordering Information

Part No.	Product Description
EWM-W159M201E	Advantech Brand, 802.11 ac/a/b/g/n, RTL 8822CE-CG, 2T2R, w/ BT5.0 (Low energy operation)

### Suggested Antenna and Cable

Part No.	Specifications
1750002842	WiFi 2.4 GHz and 5 GHz dipole Antenna
1750007965-01	WiFi Coaxial Cable, SMA (M) to MHF4, 300 mm
1750008717-01	WiFi Dual band 2.4G and 5G Antenna